




Who we are

# Trellis Society

## Holistic System of Care

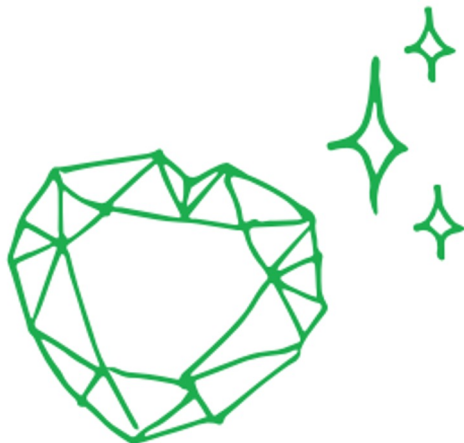
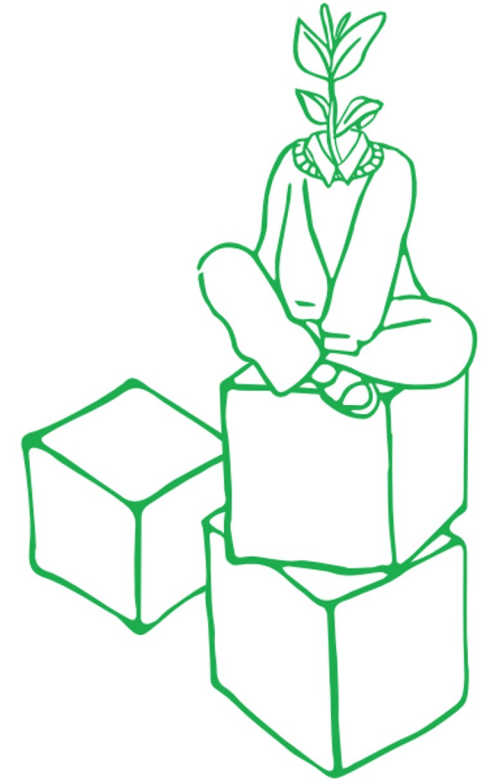
- Economic Stability
  - Belonging and Connection
  - Mental Health and Well-being & Healing
  - Generational Impact
- 



**What we do**

# Community Well-Being

**Child Development & Parenting Support  
Cultural & Community Connections  
Mental Health, Well-Being & Healing**



**What we do**

# Housing

**Emergency Youth Shelter**

**Housing for Youth, Adults & Families**

**Safe Homes for Children & Youth**



# Complex youth data

**23 youth** represent 15% of all youth served,  
but ~50% of bed night stays

- All have past or present Children's Services involvement
- All but 3 youth are addicted to/currently using meth and/or fentanyl
- All but 1 youth has spent more than 1 month in CYOC (youth justice)
- Ability to analyze other program involvement due to Trellis' size

**Literature Review & Oral Stories**

**Engagement & Learning**

**Transformation Framework &  
Development**

**Group Care  
Transformation  
Project Phases**



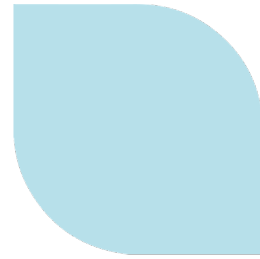
# Trellis Group Care Transformation Framework

## 5 Principals

- **Self-Determination & Sovereignty**
  - **Prevention & Preservation of the Family**
  - **Belonging & Healing from Separation**
  - **Relational & Trauma Informed**
  - **Holistic and Lifespan**
- 
- 

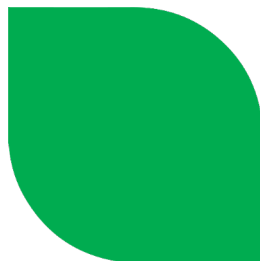
## Current State

- Provide safe & responsive Group Care
- Safety and Containment Model



## Transformed

- Preservation of Family & Communities
- Goal to transition to respite support for families
- Family Care Models Replace Child Intervention Models



## Improved

- Youth Connect to Culture & Family
- Flexible Family & Natural Support Case Management
- Reduce # of youth per home
- Family Lodge Pilot
- Transition to Family System and Prevention Orientation