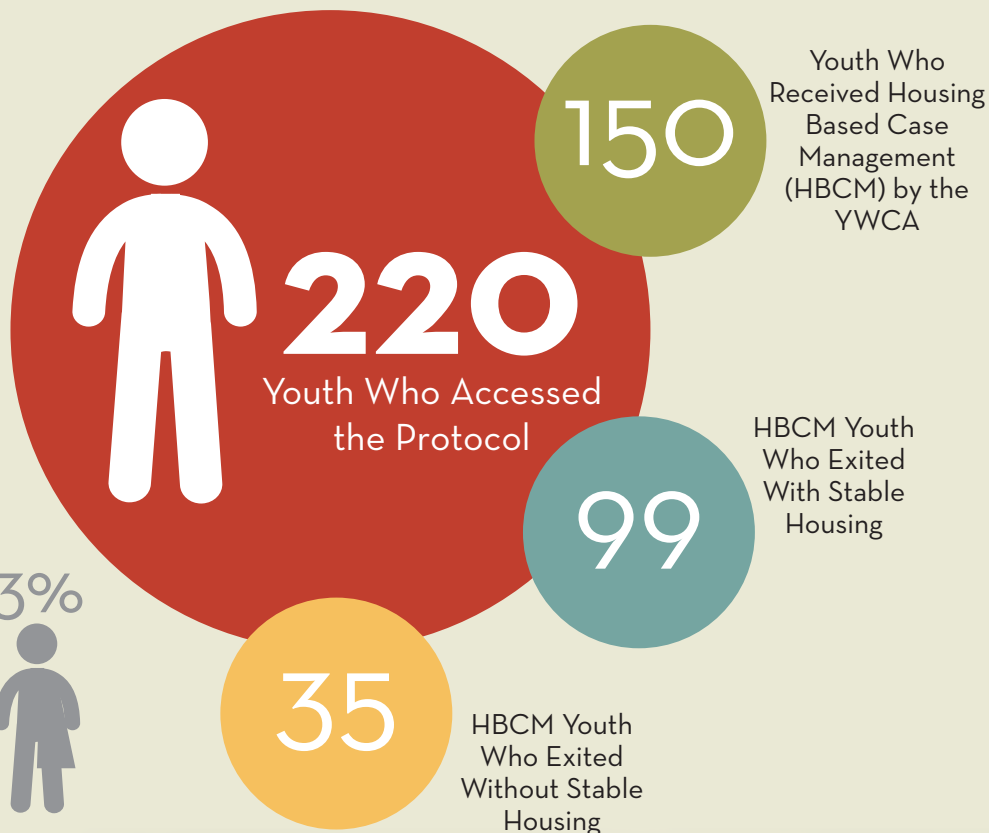
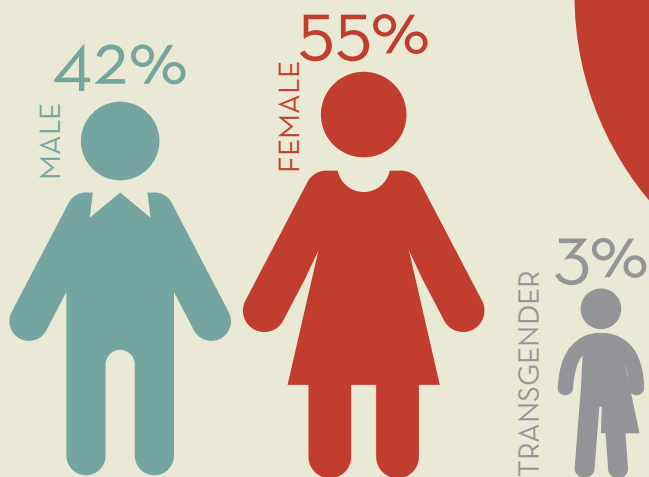


taking action on  
**YOUTH HOMELESSNESS**

**PREVENTING AND  
ENDING YOUTH HOMELESSNESS  
IN ST. THOMAS-ELGIN**

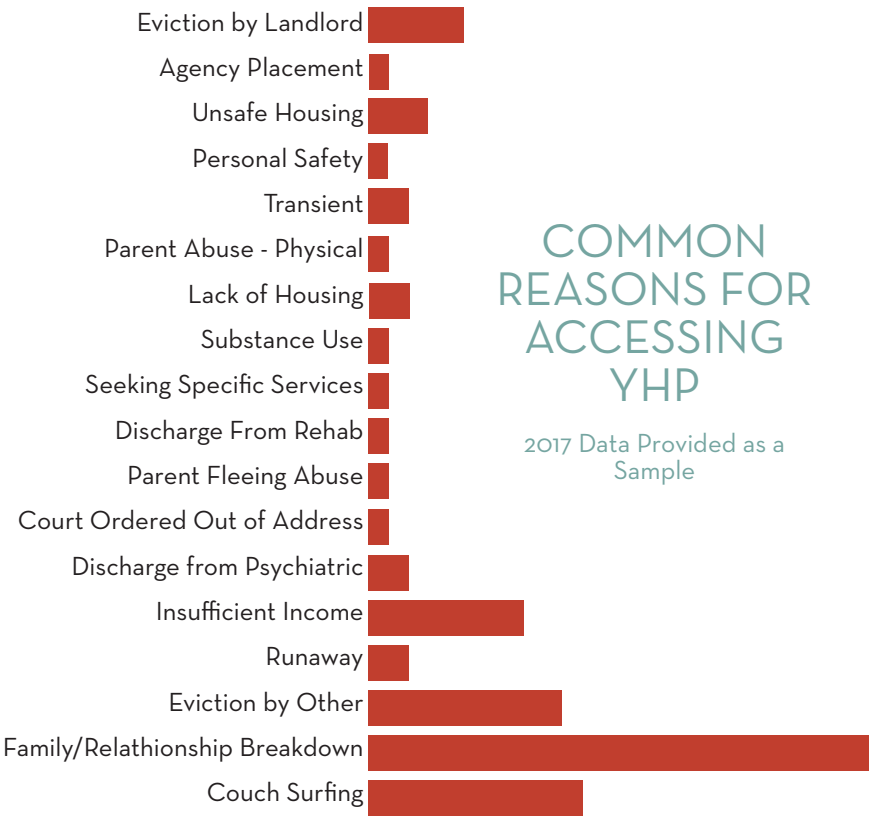
March 2016 - July 2018

GENDER IDENTITY  
BREAKDOWN OF YHP YOUTH

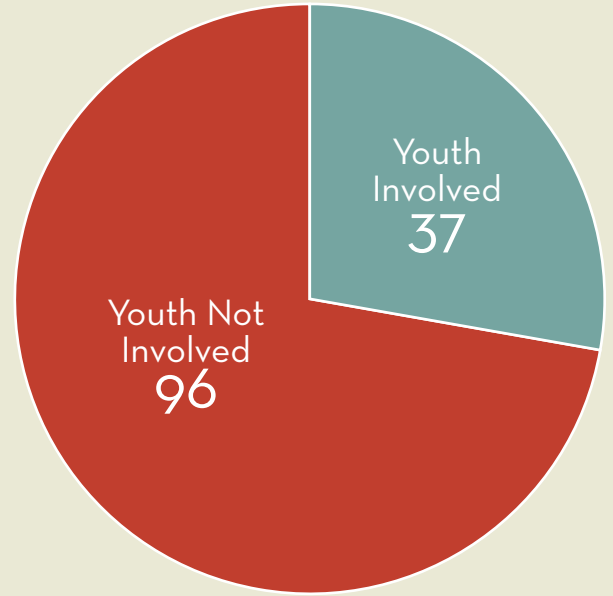


AGE  
DISTRIBUTION  
OF YHP YOUTH  
(N=220)





## YOUTH INVOLVED WITH THE JUSTICE SYSTEM (N=133)



## IMPACT OF HOUSING BASED CASE MANAGEMENT



61%

of successful youth exits were supported by support and reconnection with family members and caring adults.



26%

of the youth participants were attending education classes/earning educational credits upon exit.



39%

of the homeless youth supported were working towards gaining employment

## YOUTH ACCESSING THE HEALTH CARE SYSTEM

In examining the youth's interaction with the health system, 17 youth were admitted to hospital for medical and/or mental health needs. The average stay was 12.8 days with the longest stay being 90 days. 37 youth in need of urgent medical/mental health care accessed Emergency Department services 104 times.

## YOUTH INVOLVEMENT WITH CHILD PROTECTION

Youth involved with child protection services are often at greater risk for homelessness. Of the 220 youth accessing the Youth Homelessness Protocol, 17% or 38 youth were involved with child protection services. These youth were matched with a Youth in Transition Worker from the YWCA and/or Family and Children's Services. This number does not include all youth in care or former youth in care experiencing homelessness who were already connected with a Youth in Transition Worker, just those who accessed the Protocol.

25 Youth Returned to a Family Home



41 Youth Returned to Permanent Housing With Family or Friend