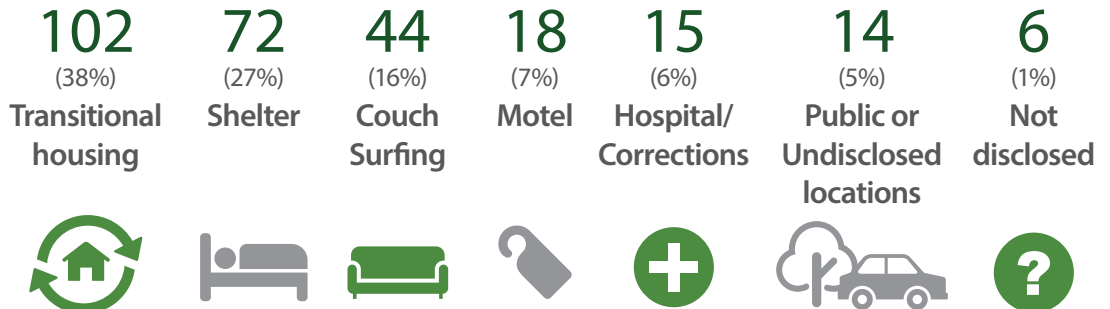


Halton Region's Point in Time Count

2018 DASHBOARD

271
Total individuals/
head of household
experiencing
homelessness
identified

Staying in:



Unsheltered homelessness decreased by 5% since the last enumeration.

70
Volunteers
participated



30
Participating
agencies



Demographics

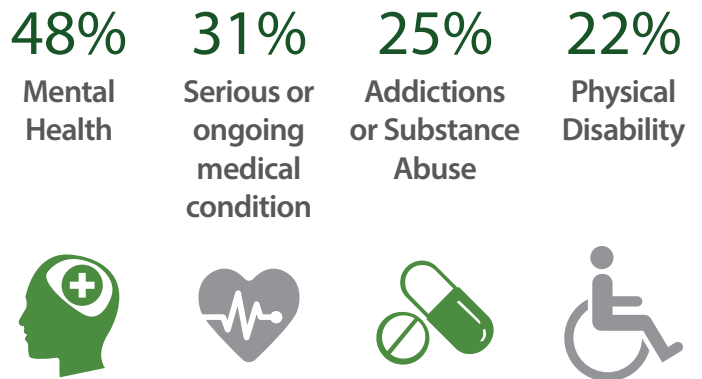


24%
are employed



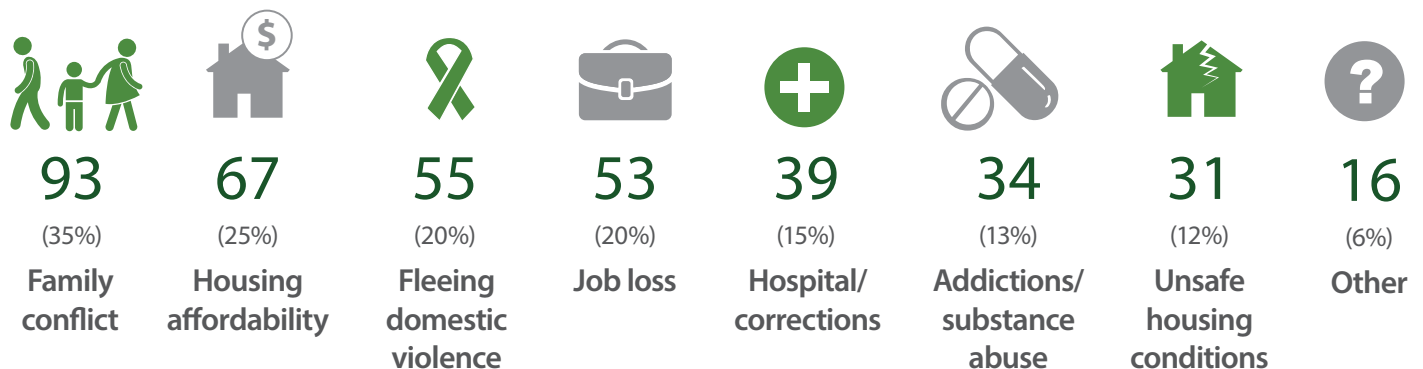
25%
moved to Halton in
the last year

Respondents reported having the following health needs



Reasons for Housing Loss

* multiple reasons provided in some cases.



Percentages rounded

